

▶ CONSUMERS' FAVORITE HOUSEPLANS

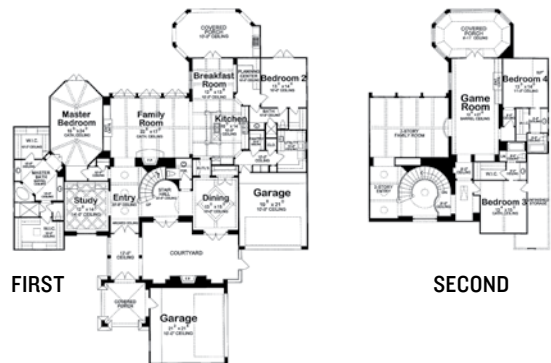


FEATURING BEST-SELLING PLANS FROM THE NATION'S LEADING DESIGNERS

In a buyer's market, it's more important than ever to ensure that your finished product is meeting the demands of today's fickle consumers. Keeping up with evolving tastes, preferences, and contemporary needs is critical to your success. In that spirit, we are proud to present the following collection of our most popular consumer house plans. These are the top twenty plans purchased directly by consumers in the past 12 months on our consumer site, www.eplans.com. This collection represents a wide range of tastes, from serviceable cottages to large family homes. Many of these plans are now available as downloadable PDFs for fast and convenient delivery.



First Floor: 3,337 sq. ft. ■ **Second Floor:** 1,292 sq. ft. ■ **Total:** 4,629 sq. ft. ■ **Bedrooms:** 4 ■ **Bathrooms:** 4 1/2 ■ **Dimensions:** 84' - 10" X 102' - 3" ■ **Foundation:** Slab



PLAN # HWB1080001 ■ 5-SET \$915 ■ 8-SET \$970 ■
REPRO \$1,225 ■ CAD \$1,815 ■ PDF \$1,225

SEE MORE HOUSE PLANS AT WWW.BUILDERHOUSEPLANS.COM

DESIGN BY CARMICHAEL & DAME